



# THE CATHEDRAL OF SAINT JOHN THE EVANGELIST

MILWAUKEE, WISCONSIN

*Our Cathedral family extends a warm welcome to all visitors and guests.*

## 5<sup>TH</sup> SUNDAY IN ORDINARY TIME



FEBRUARY 7, 2016

PRELUDE

*Prelude in F Major, Op. 101*

Charles V. Stanford

9:30AM

*With Praises Ring*

Barbara Kinyon

## INTRODUCTORY RITES

PROCESSIONAL HYMN

*Two Fishermen*

#812

GREETING

# GLORIA

## *Gloria Simplex*

Proulx



Glo - ry to God in the high - est, and on earth peace to peo - ple of good will.



We praise you, we bless you, we a - dore you, we glo - ri - fy you,



we give you thanks for your great glo - ry, Lord God, heav - en - ly King,



O God, al - might - y Fa - ther. Lord Je - sus Christ, On - ly Be - got - ten Son,



Lord God, Lamb of God, Son of the Fa - ther, you take a - way the sins of the world,




have mer - cy on us; you take a - way the sins of the world, re - ceive our prayer;



you are seat - ed at the right hand of the Fa - ther, have mer - cy on us.



For you a - lone are the Ho - ly One, you a - lone are the Lord, you a - lone are the Most High, Je - sus Christ,



with the Ho - ly Spir - it, in the glo - ry of God the Fa - ther. A - - men.

©2010 World Library Publications, a division of J.S. Paluch Company, Inc., Schiller Park, IL 60176. All rights reserved. Reprinted under AL0816962

## OPENING PRAYER

# LITURGY OF THE WORD

FIRST READING

*Isaiah 6: 1-2a, 3-8*

RESPONSORIAL PSALM

PSALM 138

*In the sight of the angels*

Isele



In the sight of the an-gels I will sing your prai-ses Lord.

The musical notation is a single staff in G major (one flat) and common time (C). It begins with a treble clef and a key signature of one flat. The melody consists of quarter and eighth notes, ending with a final cadence.

©1975, GIA Publications, Inc. All rights reserved. Reprinted under OneLicense.net #A-703573.


SECOND READING

*1 Corinthians 15: 1-11*

GOSPEL ACCLAMATION

*Alleluia*

Murray



Al - le - lu - ia, al - le - lu - ia, al - le - lu - ia.

The musical notation is a single staff in G major (one flat) and 3/4 time. It begins with a treble clef and a key signature of one flat. The melody consists of quarter and eighth notes, ending with a final cadence.

©1958, The Grail, GIA Publications, Inc., Chicago, IL. All rights reserved. Reprinted under OneLicense.net #A-703573.

GOSPEL

*Luke 5: 1-11*

HOMILY

## PROFESSION OF FAITH

I believe in one God,  
the Father almighty,  
maker of heaven and earth,  
of all things visible and invisible.

I believe in one Lord Jesus Christ,  
the Only Begotten Son of God,  
born of the Father before all ages.  
God from God, Light from Light,  
true God from true God,  
begotten, not made, consubstantial with the Father;  
through him all things were made.  
For us men and for our salvation  
he came down from heaven,

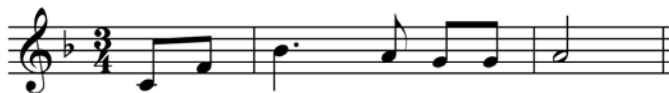
*[all bow] and by the Holy Spirit was incarnate of the Virgin Mary,  
and became man.*

For our sake he was crucified under Pontius Pilate,  
he suffered death and was buried,  
and rose again on the third day  
in accordance with the Scriptures.  
He ascended into heaven  
and is seated at the right hand of the Father.  
He will come again in glory  
to judge the living and the dead  
and his kingdom will have no end.

I believe in the Holy Spirit, the Lord, the giver of life,  
who proceeds from the Father and the Son,  
who with the Father and the Son is adored and glorified,  
who has spoken through the prophets.

I believe in one, holy, catholic and apostolic Church.  
I confess one Baptism for the forgiveness of sins  
and I look forward to the resurrection of the dead  
and the life of the world to come. Amen.

## GENERAL INTERCESSIONS



Gra - cious Lord, hear us we pray.

## LITURGY OF THE EUCHARIST



Since the Cathedral receives no subsidy from the Archdiocese, we rely heavily on the generosity of our members and guests.

Please scan the QR code or go to [www.stjohnncathedral.org](http://www.stjohnncathedral.org) and click on the "Donate" button.

Thank you for your support of our ministries and services.

## PREPARATION OF THE ALTAR AND GIFTS

9:30AM

*A Prayer on Slane*

Traditional Irish Folksong  
arr. Jeffery Honoré

11:00AM

*Bless the Lord, O my soul*

Mikhail Ippolitov-Ivanoff

## PRAYER OVER THE GIFTS

## EUCHARISTIC PRAYER

SANCTUS

*A Community Mass*

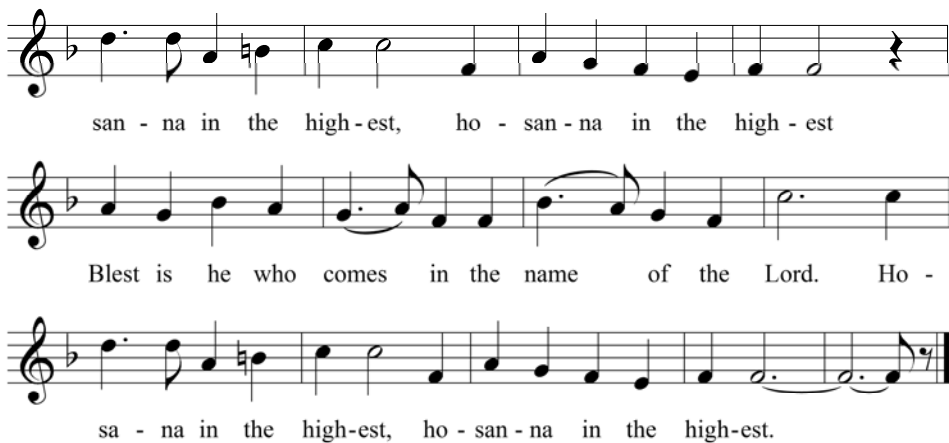
Proulx



Ho - ly, ho - ly ho - ly Lord God of hosts.



Heav'n and earth are full of your glo - ry. Ho -



san - na in the high - est, ho - san - na in the high - est

Blest is he who comes in the name of the Lord. Ho -

sa - na in the high - est, ho - san - na in the high - est.

©1971, 1977, 2006, GIA Publications, Inc., Chicago, IL 60638. All rights reserved. Reprinted under OneLicense.net #A-703573.

## MEMORIAL ACCLAMATION

### *A Community Mass*

Proulx



We pro-claim your Death, O Lord, and pro-fess your Res - ur -

rec - tion un - til you come a - gain.

©1985, 2010, GIA Publications, Inc., Chicago, IL 60638. All rights reserved. Reprinted under OneLicense.net #A-703573.

## AMEN

### *A Community Mass*

Proulx



A - men, a - men, a - - - men.

©1971, 1977, GIA Publications, Inc., Chicago, IL 60638. All rights reserved. Reprinted under OneLicense.net #A-703575.



## COMMUNION

### *Blest Are They*

Haas



Re - joice and be glad! Bless-ed are you, ho - ly are you! Re -



joice and be glad! Yours is the king-dom of God!

©1985, GIA Publications, Inc, exclusive agent. All rights reserved. Reprinted under OneLicense.net #A-703573.

9:30AM

### *Blest are They*

David Haas & Michael Joncas  
Handbell arr. Philip L. Roberts

11:00AM

### *Alleluia, song of gladness*

arr. Richard Proulx

## PRAYER AFTER COMMUNION

## CONCLUDING RITE

## BLESSING & DISMISSAL

HYMN

*You Walk Along Our Shoreline*

**#807**

POSTLUDE

*Grand Choeur*

Théodore Dubois

9:30AM

*Chaconne*

Louis Couperin

We invite you to join us for coffee and an opportunity to mingle  
with other parishioners in the Atrium after Sunday Masses.

Please help us prepare for the next liturgy by  
returning this order of worship to its box at any door.